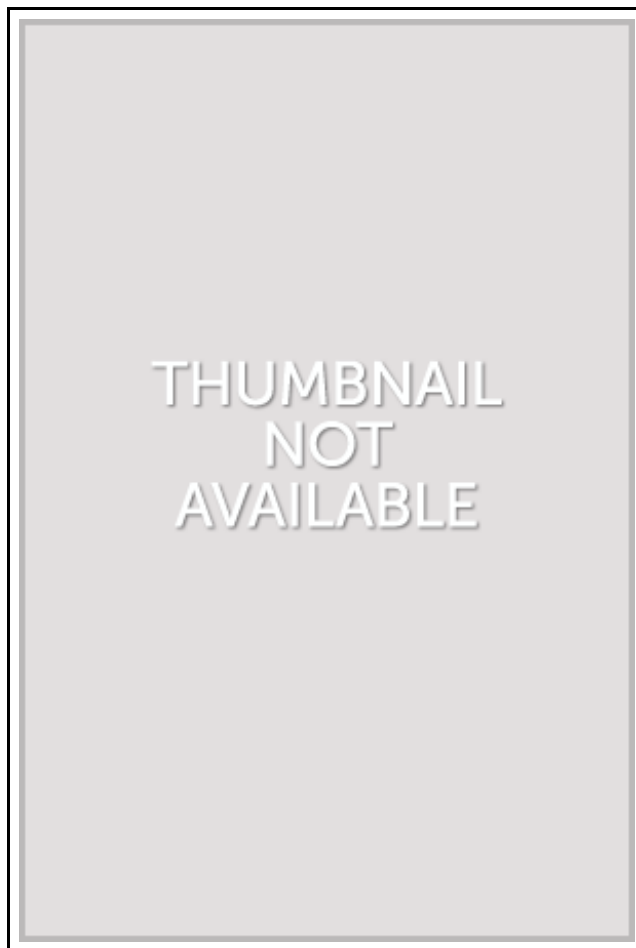


## Intertidal Reconnaissance Survey to Assess Composition, Distribution, and Habitat of Marine Estuarine Infauna in Soft Sediments in the Southwest Alaska Network



Filesize: 2.44 MB

### ***Reviews***

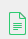
*An extremely awesome publication with lucid and perfect explanations. It is actually written in basic phrases rather than confusing. You will like how the writer publishes this book.*  
*(Melody Jakubowski)*


## **INTERTIDAL RECONNAISSANCE SURVEY TO ASSESS COMPOSITION, DISTRIBUTION, AND HABITAT OF MARINEESTUARINE INFAUNA IN SOFT SEDIMENTS IN THE SOUTHWEST ALASKA NETWORK**



To download **Intertidal Reconnaissance Survey to Assess Composition, Distribution, and Habitat of MarineEstuarine Infauna in Soft Sediments in the Southwest Alaska Network** eBook, please follow the link below and save the file or gain access to other information which might be have conjunction with INTERTIDAL RECONNAISSANCE SURVEY TO ASSESS COMPOSITION, DISTRIBUTION, AND HABITAT OF MARINEESTUARINE INFAUNA IN SOFT SEDIMENTS IN THE SOUTHWEST ALASKA NETWORK book.

CreateSpace Independent Publishing Platform. Paperback. Book Condition: New. This item is printed on demand. Paperback. 94 pages. Dimensions: 11.0in. x 8.5in. x 0.2in.As part of a program to develop a long-term monitoring program in the national parks comprising SWAN, we examined soft sediments on beaches in Kenai Fjords National Park (KEFJ) and Lake Clark National Park and Preserve (LACL) in 2004 and Katmai National Park and Preserve (KATM) during 2005. The objective of this reconnaissance survey was to assess species composition and distribution of the infauna, obtain information that will be used to design the sampling program and select species for long-term monitoring, and make recommendations on how that program should be structured. Although samples were collected to provide insight into the microinfauna, the focus of the program was on several larger (macrofaunal) bivalves used for prey by important predators in SWAN (esp. brown bears (*Ursus arctos*), sea otters (*Enhydra lutris*), and diving ducks (e. g. , *Melanitta* spp. , *Histrionicus histrionicus*, and *Clangula hyemalis*)). This item ships from La Vergne,TN. Paperback.

 [\*\*Read Intertidal Reconnaissance Survey to Assess Composition, Distribution, and Habitat of MarineEstuarine Infauna in Soft Sediments in the Southwest Alaska Network Online\*\*](#)

 [\*\*Download PDF Intertidal Reconnaissance Survey to Assess Composition, Distribution, and Habitat of MarineEstuarine Infauna in Soft Sediments in the Southwest Alaska Network\*\*](#)

## See Also



### [PDF] The Mystery at Motown Carole Marsh Mysteries

Access the web link beneath to download "The Mystery at Motown Carole Marsh Mysteries" file.

[Save ePub »](#)



### [PDF] The Whale Tells His Side of the Story Hey God, Ive Got Some Guy Named Jonah in My Stomach and I Think Im Gonna Throw Up

Access the web link beneath to download "The Whale Tells His Side of the Story Hey God, Ive Got Some Guy Named Jonah in My Stomach and I Think Im Gonna Throw Up" file.

[Save ePub »](#)



### [PDF] The Stories Julian Tells A Stepping Stone BookTM

Access the web link beneath to download "The Stories Julian Tells A Stepping Stone BookTM" file.

[Save ePub »](#)



### [PDF] Absolutely Lucy #4 Lucy on the Ball A Stepping Stone BookTM

Access the web link beneath to download "Absolutely Lucy #4 Lucy on the Ball A Stepping Stone BookTM" file.

[Save ePub »](#)



### [PDF] Viking Ships At Sunrise Magic Tree House, No. 15

Access the web link beneath to download "Viking Ships At Sunrise Magic Tree House, No. 15" file.

[Save ePub »](#)



### [PDF] Animalogy: Animal Analogies

Access the web link beneath to download "Animalogy: Animal Analogies" file.

[Save ePub »](#)